



# Pro-face

## Pro-face AGP & Sick Barcode Scanner

### EASY INTEGRATION

Two great companies that make integration of 1D or 2D data into your control system or plant IT System very easy! SICK wired and wireless hand held readers are tested for direct connection to the Pro-face AGP Series display. Eliminating the need for dedicated barcode stations you can now use the Pro-face AGP Series extensive built in connectivity features to share barcode input with any device connected to the HMI.

Pro-face AGP3000 models are available in 3.8" to 15" screen sizes with Amber, Monochrome and STN or TFT Color displays.



### EASY CONNECTIVITY

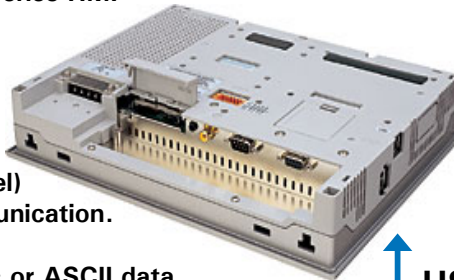
Use the barcode readers standard USB or Serial cable to connect to the USB or Serial Port on the Pro-face AGP Series HMI

Pro-face AGP3000 Series HMI support both 1 and 2 Dimensional readers

When using a barcode reader the AGP still allows up to 2 or 4 Device/PLC drivers (depending on the hardware model) using a mix of Ethernet and Serial communication.

Barcode Input can be handled as numeric or ASCII data.

Use the barcode input to automatically load recipe data to any connected device or simply pass the barcode information on to any other device in your system.



### CONTACT

# Pro-face

**Right Size, Right Technology Solutions**



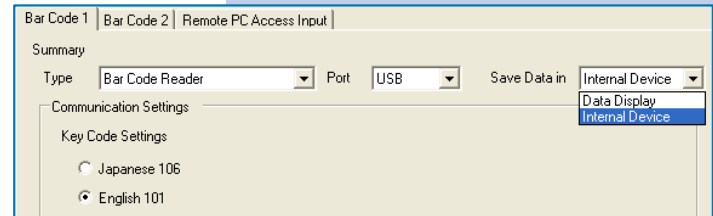
## EASY CONFIGURATION

Using the Pro-face GP-Pro EX Screen and Logic Editing software Barcode Reader setup could not be easier.

### STEP 1 – Hardware Configuration

- 1) Select Bar Code (1D) or 2 Dimensional Code Reader
- 2) Select the connection method (Serial or USB)
- 3) Select to save the data to a standard numeric display or to the internal memory of the HMI. For 2 Dimensional Codes Internal Memory is recommended: 30,000 16-Bit registers are available in the AGP for fast access

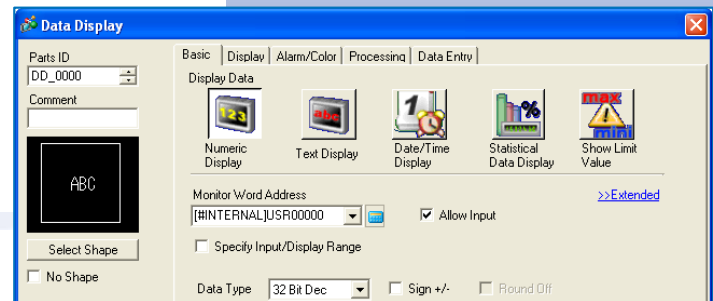
### STEP 1 – Hardware Configuration



### STEP 2 – Displaying the Barcode Input

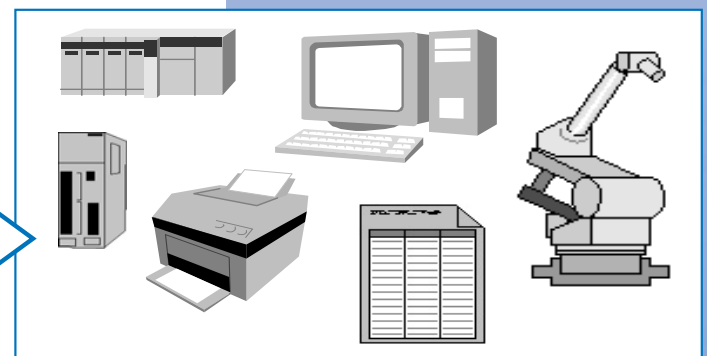
- 1) In the GP-Pro EX Screen Editor place a standard Data Display
- 2) Select Numeric Display (for 16 or 32 bit Decimal or Floating Point data) or Text Display (for ASCII data)
- 3) Select the destination (Internal Memory or directly to your Device/PLC)
- 4) Select "Allow Input"
- 5) Select the data type or string length

### STEP 2 – Data Display



### STEP 3 – Enable Barcode Input

- 1) In the Data Display select the Data Entry tab
- 2) Click "Extended" and select "Input Barcode"



## Useful links:

- <http://www.profaceamerica.com>
- (CP WEBSITE HERE)
- <http://www.sickusa.com>

